

AVAILABLE FOR SALE

INVESTCOMM COMMERCIAL GROUP

# Prime Development Location

Rt. 111 - Biddeford, ME

594-598-600 Alfred Street

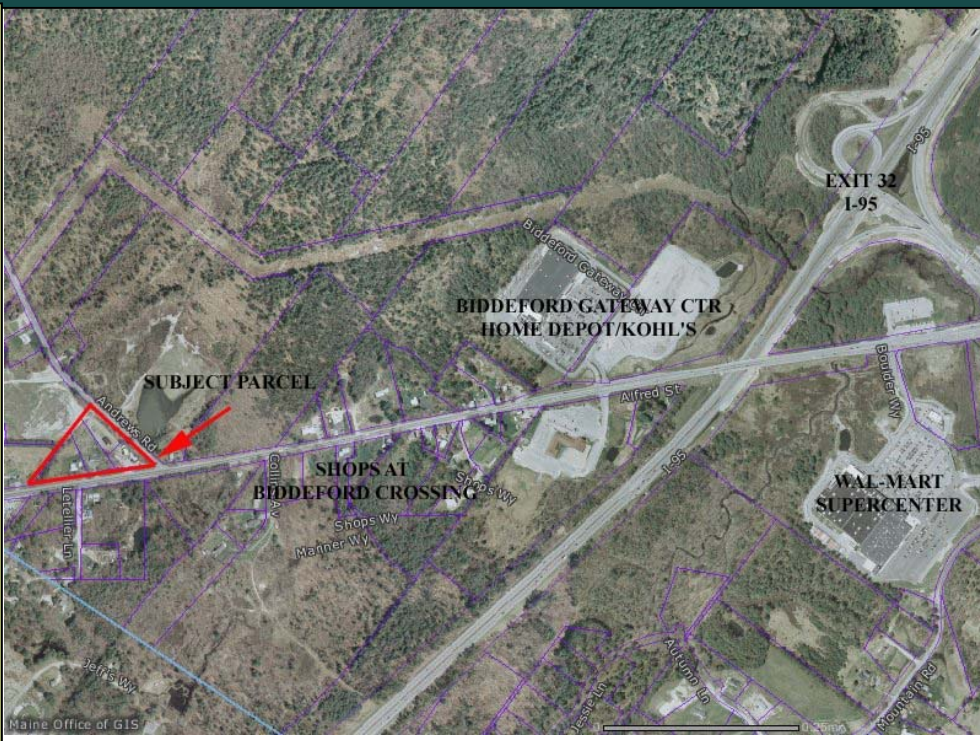
High Growth Commercial Location

Zone: B2

.75 miles from Exit 32 of I-95

731+\_' Frontage on Rt 111  
539 +\_' Frontage on Andrews Rd

4 +\_ Acres



*Complete commercial and investment real estate services*

INVESTCOMM COMMERCIAL GROUP

206 Lafayette Center  
Kennebunk, Maine 04043

Phone: 207-985-4977 x 46  
Fax: 207-985-4979  
Email: [janderson@investcomm.com](mailto:janderson@investcomm.com)  
Web site: [Investcomm.com](http://Investcomm.com)

Very Developable Site

Asking

Close proximity to Biddeford Crossing

\$1,655,000

4 +\_ Acres

20,000+ vehicles/day

Call John Anderson for more information or a tour of this outstanding location opportunity

